

D8 Wireless ultrasound

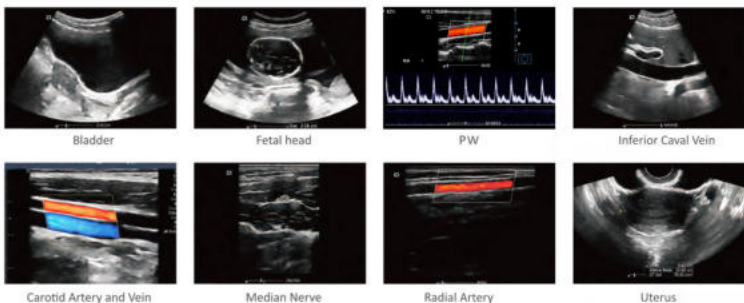
- Excellent imaging quality
- Detachable transducer heads
- 8 Hours
- 8H scan time



WiFi & USB Connection Supported



Clinical images



Ergonomic Design



Hardware		Software	
Dimension	160mm*55mm*20mm	Platform	iOS, Android, Windows
Weight	About 220g	Modes	B, M, 2B, THI, Color, Power, PW
Battery life	ca. 8 hours	Control	Gain, TGC, Depth, Frequency, Focus position, frame correlation, TSI, Gray map, Expand, L/R Flip, U/D Flip, Dynamic range, Space compounding, THI, Image Enhance
Charging time	ca. 3 hours		
Supported transducer heads	convex, linear, micro-convex	Presets	Abdomens, Cardiology, GYN, OB, Kidney, Urology, VAS, small Parts, Carotid, MSK, Nerve, Orthopedic, etc.
Frequency	2-11 Mhz		
Connection	wireless, wired		

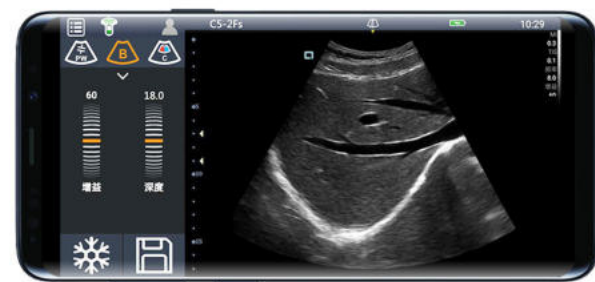
Probe Specification

Probe Image	Probe type	Model	Freq (MHZ)	Bandwidth (MHZ)	Radius/Footprint	Application
	Convex	C5-2Ks	3.5	2.5-5	R60	Abdomen, Gynecology, Obstetrics, Urology, Lung
	Linear	L11-4Ks	7.5	6-11	L40	Vascular, Small Parts, Breast, MSK, Nerve, Anesthesia
	Small Linear	L11-4Gs	8.0	6-11	L25	Nerve, Anesthesia, Vascular, Small Parts, Breast, MSK
	Micro-convex	C8-5Ks	6.5	5-8	R15	Neonatal Abdominal, Small Parts, Neonatal Cardiac

Z3 USB ultrasound



Android and Windows Supported



Probe Specification

Probe Image	Probe type	Model	Freq (MHZ)	Bandwidth (MHZ)	Radius/Footprint	Application
	Convex	C5-2Ds	3.5	2.5-5	R60	Abdomen, Gynecology, Obstetrics, Urology, Lung
	Linear	L11-4Ds	7.5	6-11	L40	Vascular, Small Parts, Breast, MSK, Nerve, Anesthesia
	Micro-convex	C8-5Ds	6.5	5-8	R15	Neonatal Abdominal, Small Parts, Neonatal Cardiac
	Transvaginal	E10-4Ds	6.5	5-8.5	R10	Obstetrics/Gynecology, Urology, IVF, Pelvic



Youkey



Wireless ultrasound



Mobile Imaging
Intelligent Medical

WuHan Youkey Bio-Medical Electronics Co., Ltd.

ADD : 2nd Floor, Dingxin Industry park, Jiayuan Road, East Lake Development District, Wuhan 430074, China
Tel : +86 27 87797167
Web : www.youkeymedical.com
Email : info@youkeymedical.com



Youkey Ultrasound

Wuhan Youkey Bio-Medical Electronics Co.,Ltd is focusing on wireless ultrasound equipments with leading technology for healthcare professionals.

We have seasoned team of researchers, engineers and executives, as well as many key technologies protected by patents.

Exceptional imaging, remarkable durability, accessible pricing—putting quality ultrasound into more hands.

Q7 Wireless ultrasound

160g with cellphone size, the Q7 can be carried to anywhere in need.

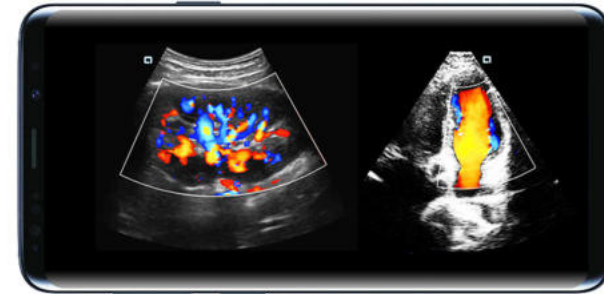


Technical characteristics

One probe unit handles various applications just by changing transducer heads.



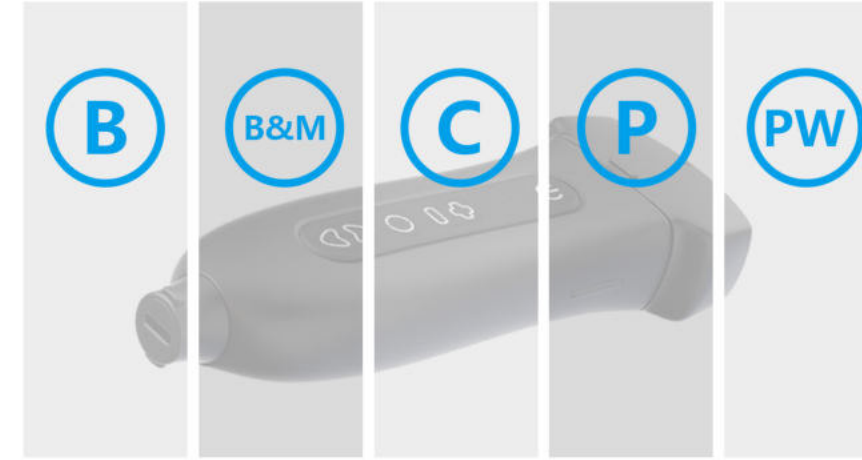
One transducer head for both abdomen and cardiac.



Abdomen scan Cardiac scan



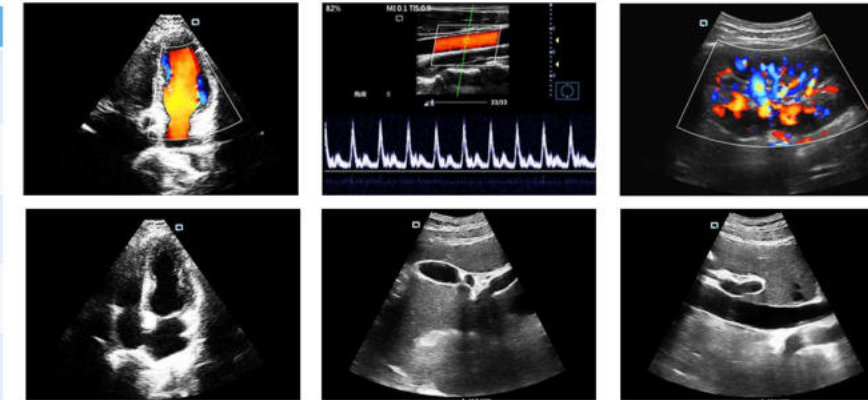
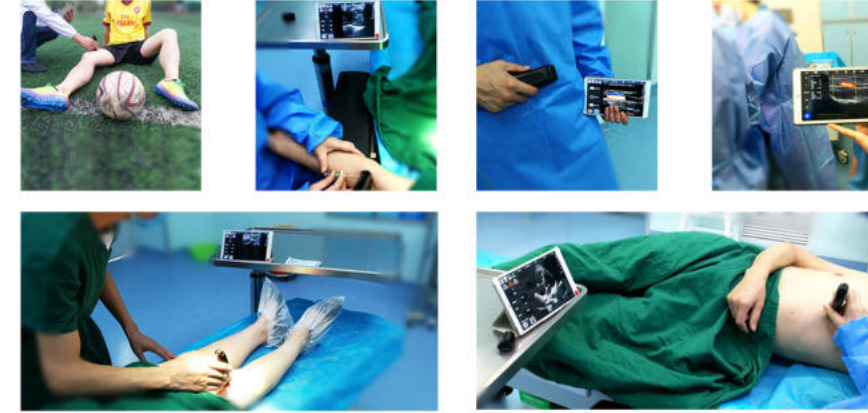
Specification



Net weight	About 160g
Size	150mm*40mm*25mm
Battery life	≥4 hours
Platform	Android, Windows, iOS
Connection Type	WiFi & USB
Supported devices	Tablet or smart phone, PC, etc.
Probes	Cardiac, convex, linear, micro-convex, transvaginal
Modes	B, BM, 2B, THI, Color, Power, PW
Language	Multiple Languages supported
Zoom	Max 10 times
Other function	Patient information Management DICOM 3.0

Probe image	Probe type	Model	Freq (MHZ)	Bandwidth (MHZ)	Radius/Footprint	Application
	Convex & Cardiac	C5-2Fs	3.5	2-5	R50	Emergency Cardiac, Abdomen, OB/GYN, Urology, Lung
	Convex	C5-2Ks	3.5	2.5-5	R60	Abdomen, OB/GYN, Urology, Lung
	Linear	L11-4Ks	7.5	6-11	L40	Vascular, Small Parts, Breast, MSK, Nerve, Anesthesia
	Small Linear	L11-4Gs	8.0	6-11	L25	Nerve, Anesthesia, Vascular, Small Parts, Breast, MSK
	Micro-convex	C8-5Ks	6.5	5-8	R15	Neonatal Abdominal, Small Parts, Neonatal Cardiac
	Transvaginal	E10-4Ks	6.5	5-8.5	R10	Obstetrics/Gynecology, Urology, IVF, Pelvic

Application



IOS, Android and Windows Supported
WiFi & USB Connection Supported

